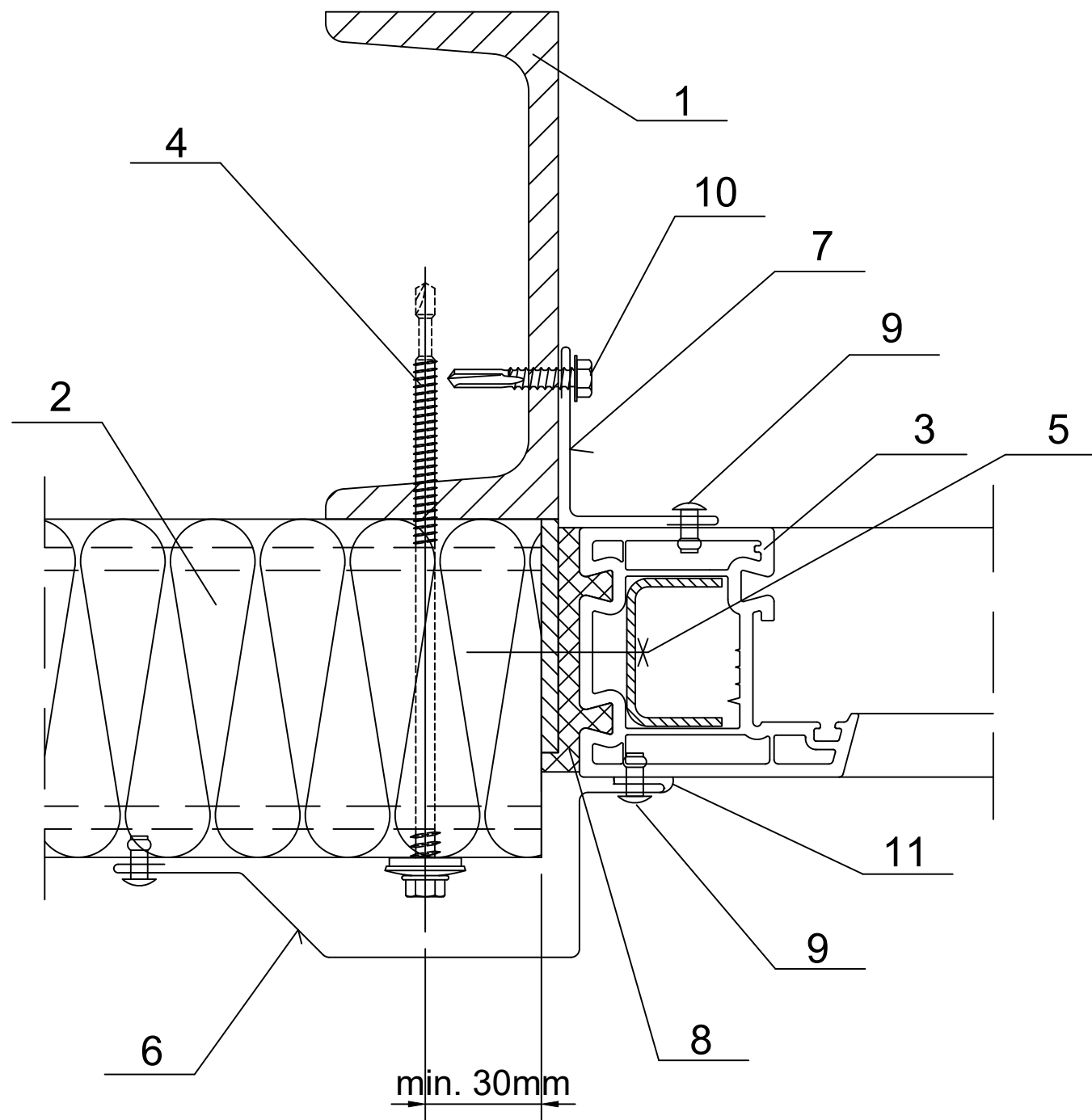


Date	Rev. date	Work nr.	Drw. nr.	Rev.
Drawn by Ruukki	Rev.	M27/S31	-	
Scale 1:3	Building		File nr. P2001/003-00039	



1. Steel column acc. to engineering design of the structure
2. Ruukki SP2B PIR
3. PCV window
4. Panel fastener for hot-rolled sheeting rail or for cold-bent sheeting rail
5. Tap screw for fixing windows (every 500 mm)
6. Custom orderd flashing
7. Flashing EA1B05
8. PIR expanding foam
9. Steel rivet (every 300 mm)
10. Tap screw for metal sheet
11. Permanently elastic sealing compound